



## Stratus® Electricity Meter

### Enabling Intelligence at the Grid Edge

The Stratus meter delivers intelligence at the edge technology providing electric utilities, municipalities and cooperatives with increased energy efficiency, enhanced safety standards, faster restoration of service and opt-in capabilities. By capturing and analyzing more data it's easy to increase your operational efficiency.

Combined with the Sensus FlexNet™ communication network, Stratus is a quantum leap forward in smart city and smart grid enablement. With FlexNet you can instantly configure, upgrade and customize the meters' electricity management platform remotely allowing you to spend more time on what's really important—your customers.

#### FEATURES

- Hardened design for improved safety
- Industry-leading temperature detection and protection technology
- Advanced billing capability
- UL 2735 certified
- AMI opt-out without network disruption

#### BENEFITS

- Flexible two-way communication via the FlexNet™ Communications Network
- FCC approved communication over unshared, primary use licensed spectrum
- Secure encryption of sensitive data
- Over-the-air firmware updates
- Delivers increased billing and usage accuracy
- Quickly provides data for safe, accurate and reliable smart grid management

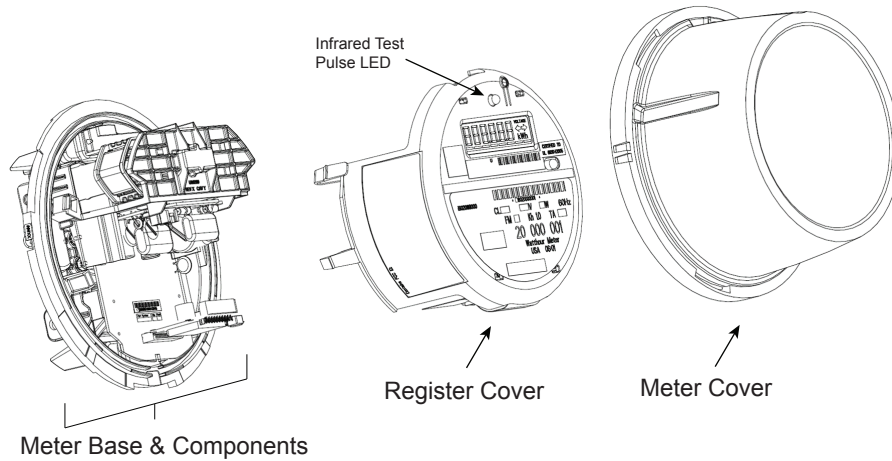
#### Measurement

- kWh, kVAh, kVARh energy measurements
- Demand and load profile with load limiting (current or demand)
- AES-256 bit encryption security
- C12.19 utility industry end device ANSI Tables
- Full net metering and primary metering
- Periodic self-read
- Best-in-class power outage and restoration notification
- Up to eight seasons of Time-of-Use (TOU) in up to seven tiers of data
- Voltage measurement and configurable alarm reporting
- Remote ZigBee, radio and metrology firmware download
- 1 Wh internal and display resolution

#### Advanced Technology

- Accuracy exceeds ANSI C12.20 (Class 0.2) complies with ANSI and UL 2735
- Critical Peak Pricing (CPP)
- State-of-the-art event logging
- Remote billing with demand reset
- Local radio interface for field visits
- Complete DC immunity
- On-demand meter readings and status reports
- Cutting-edge tamper detection

**Stratus®**  
**Electricity Meter**



**SPECIFICATIONS**

Form	2SRD
Power Requirements	Voltage Rating: See Chart Frequency: 60 Hz
Accuracy	Exceeds Accuracy Class 0.2 (ANSI C12.20-2010)
Burden	Power Supply < 0.8 watts/19VA @ 240 VAC; Voltage Circuit per phase 0.00576 watts @240 VAC; Current Circuit per phase 0.2 milliohms Typical @ 25° C
Device Type	Stratus type SSA4 ESM Device Type 83; Stratus type SSA3 Legacy Device Type 50
Model	Stratus with FlexNet only: IDTB004, FCC ID: SDBIDTB004, IC ID: 2220A-IDTB004 Stratus with FlexNet & Zigbee: ZIGMOD10, FCC ID: SDBZIGMOD10, IC ID: 2220A-ZIGMOD10
Remote Disconnect	Internal disconnect switch. Rating: 200A, 240 VAC, 60 Hz, PF 0.7/0.8 lagging. Endurance: 5000 cycles, 200A, 240 VAC, 60 Hz, PF 0.7/0.8 lagging. Endurance: 25000 cycles at no load. Overload: 50 OPS, 300A, 240 VAC, 60 Hz, PF 1.0. Current Withstand: Per IEC 1036, ANSI C12.1:7,000 A Peak (5,000 Amps rms) 240 VAC, 60 Hz, for 6 cycles at 0,7/0.8 PF with normal operation after exposure; 12,000 Amps rms for 4 cycles with fail safe conditions after exposure cycles.
Dimensions	6.95 in (17.65 cm) diameter; 5.00 in (12.70 cm) depth.
Industry Standards	UL 2735 listed, ANSI C12.20 - 2010 (Class 0.2), ANSI C12.1 - 2008, ANSI C12.10 - 1997, ANSI C37.90.1 - 2002, FCC Part 15, Transient/Surge Suppression IEC 61000-4-4 - 2012 and IEEE C62.41.2 - 20002, Category B, Temperature Rise Specifications meets ANSI C12.1 Section 4.7.2.9.
Operating Environment	Temperature -40° to +85° C under the cover Humidity 0% to 95% non-condensing
Characteristic Data	Starting Watts: 5
Hardware Options	ZigBee



**SENSUS** | 637 Davis Drive | Morrisville, NC 27560 | 800.638.3748

©2020 Sensus. All products purchased and services performed are subject to Sensus' terms of sale, available at either [sensus.com/TC](https://sensus.com/TC) or 1-800-638-3748. Sensus reserves the right to modify these terms and conditions in its own discretion without notice to the customer. The Sensus logo is a registered trademark of Sensus.

This document is for informational purposes only, and SENSUS MAKES NO EXPRESS WARRANTIES IN THIS DOCUMENT. FURTHERMORE, THERE ARE NO IMPLIED WARRANTIES, INCLUDING WITHOUT LIMITATION, WARRANTIES AS TO FITNESS FOR A PARTICULAR PURPOSE AND MERCHANTABILITY. ANY USE OF THE PRODUCTS THAT IS NOT SPECIFICALLY PERMITTED HEREIN IS PROHIBITED.